



GMT MONTHLY MEMBERSHIP PROGRESS REPORT

Results as of: 6/30/2024

Multiple District 321

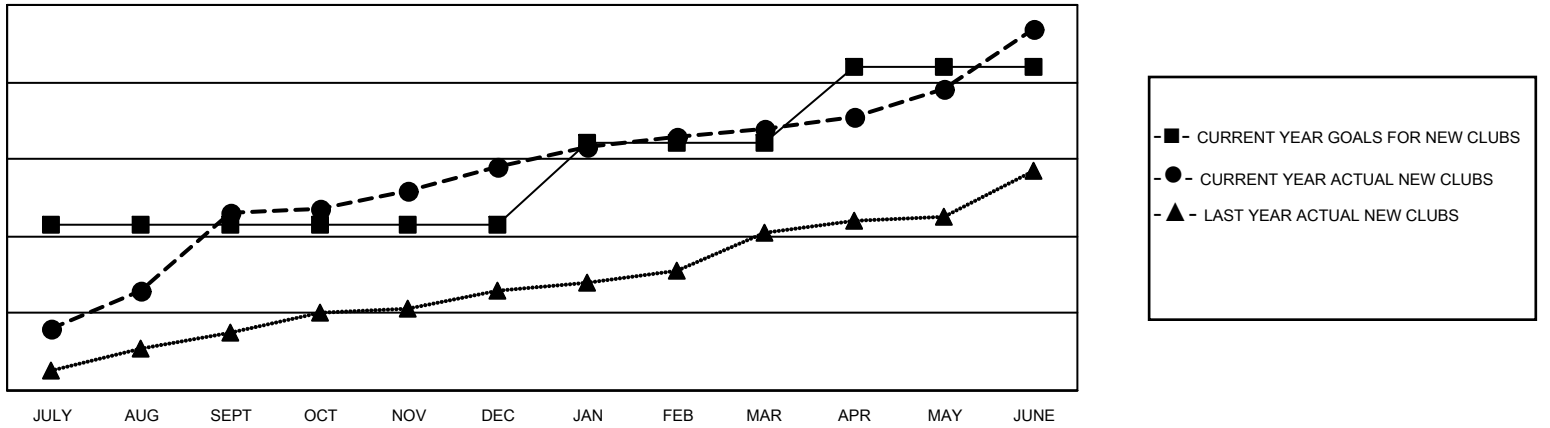
LOCATION: INDIA

GMT: OPEN

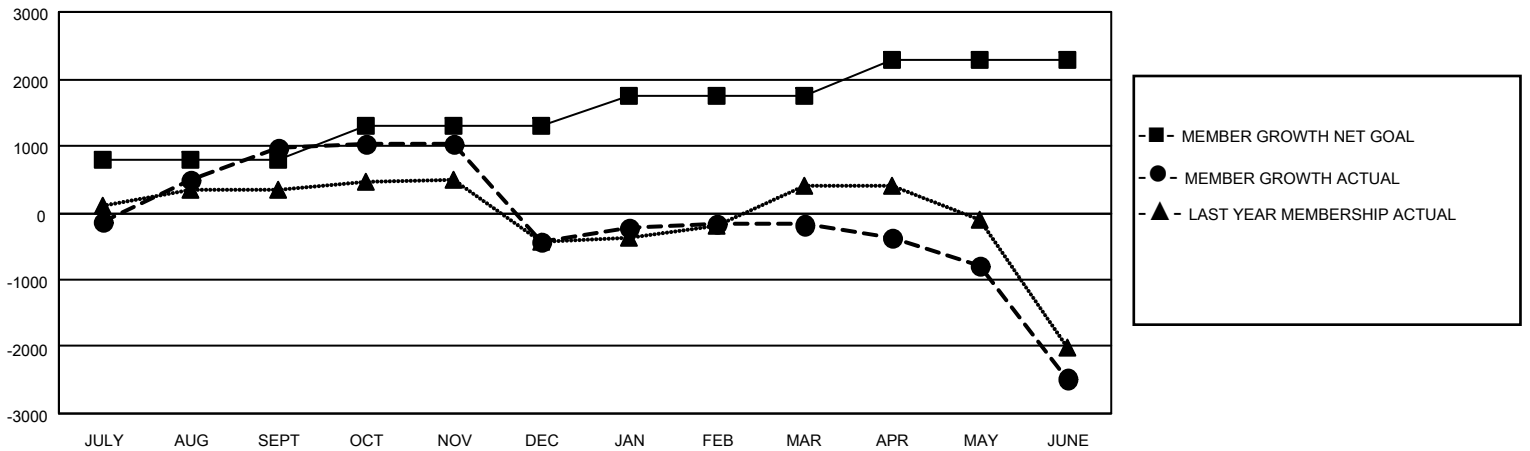
GMT CA 6 - I

Clubs				Members			
RESULTS FOR 2023-2024				RESULTS FOR 2023-2024			
QUARTER	NEW CLUB GOAL	NEW CLUBS	DROPPED CLUBS	QUARTER	MEMBER GROWTH NET GOAL	MEMBER GROWTH ACTUAL	DROPPED MEMBERS ACTUAL (including transfers)
JULY/AUG/SEPT	43	46	9	JULY/AUG/SEPT	790	2,914	1,565
OCT/NOV/DEC	0	12	32	OCT/NOV/DEC	515	1,227	2,484
JAN/FEB/MAR	21	10	12	JAN/FEB/MAR	442	1,083	643
APR/MAY/JUNE	20	26	8	APR/MAY/JUNE	545	2,100	3,903

GOALS AND ACTUAL NEW CLUBS CUMULATIVE



GOALS AND ACTUAL MEMBERS CUMULATIVE



DROPPED CLUBS: 61	754 CLUBS OF 1226 ADDED 1 OR MORE NEW MEMBERS	GENDER DISTRIBUTION MALE 21,437 (72.16%) FEMALE 8,271 (27.84%)
DROPPED MEMBERS DECEASED 129 CLUB CANCELLED 813 OTHER 7,636 TOTAL 8,578	CLICK HERE FOR CUMULATIVE MEMBERSHIP DATA	TOTAL FAMILY UNIT MEMBERS 13,474 FAMILY MEMBERS PAYING HALF DUES 8,082